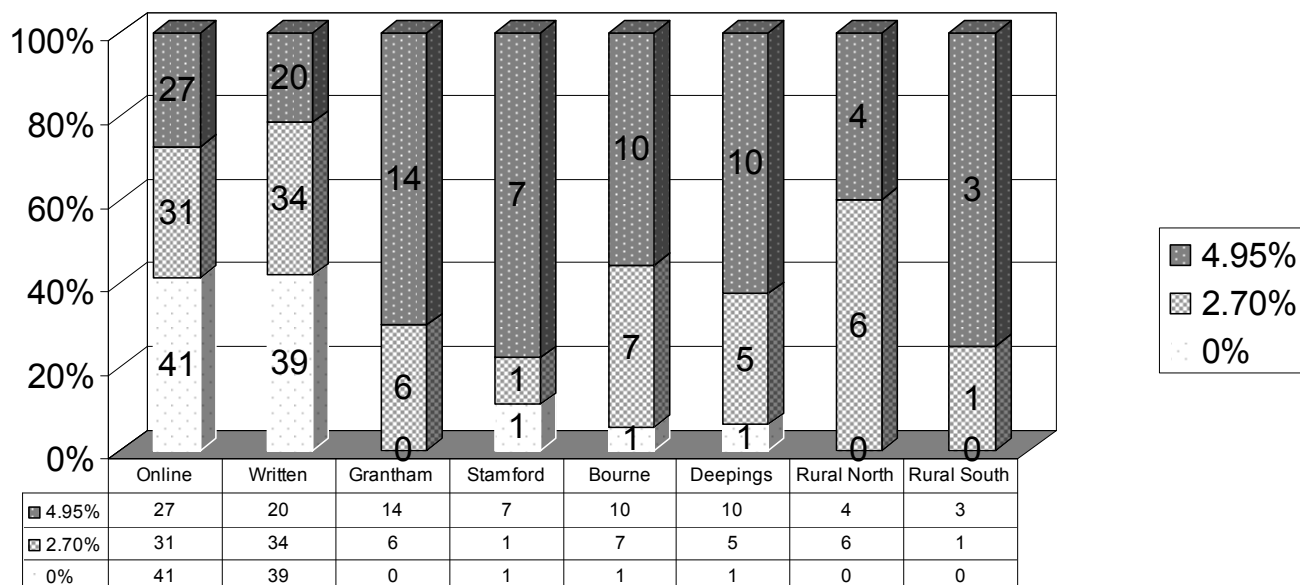
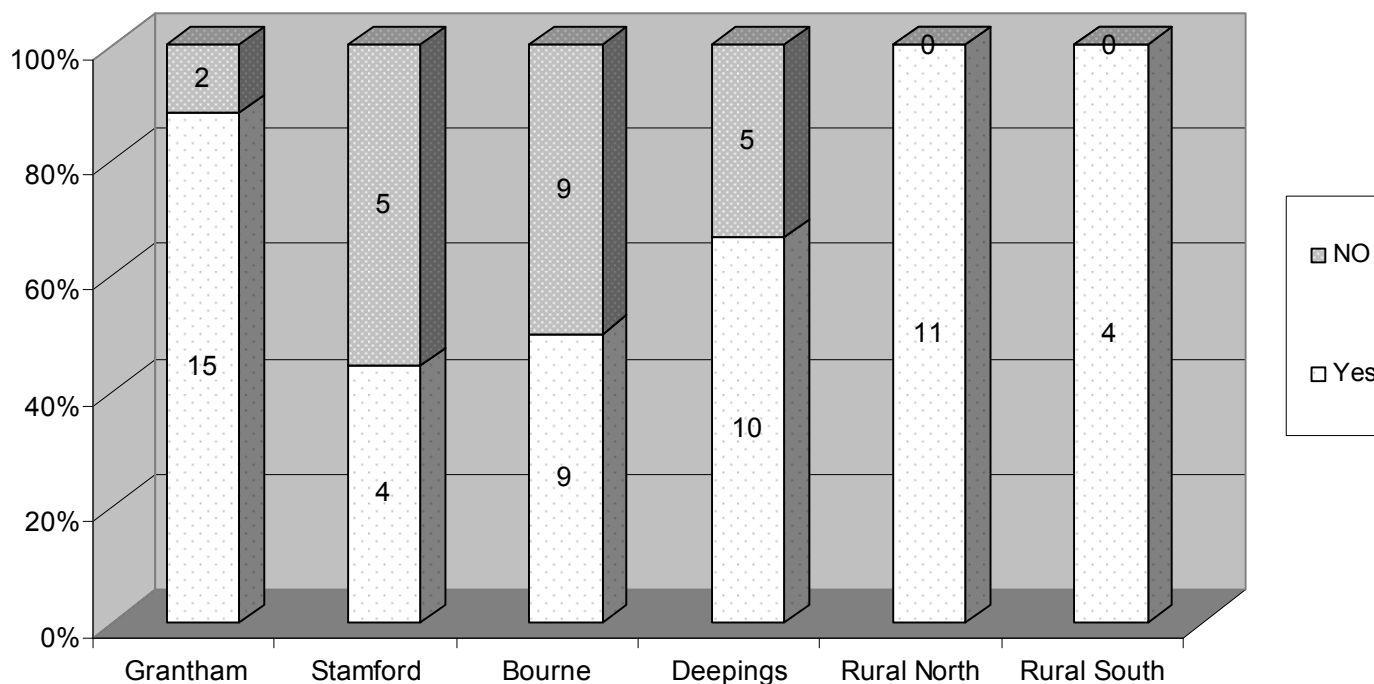


Summary of Consultation Results

Council Tax Consultation Results



Fees & Charges to increase by around 3%



Summary of Consultation Results

Other Proposals for Fees and Charges		Grantham	Stamford	Bourne	Deepings	Rural North	Rural South	Total
Car Parking Increase	10p	11	2	14	14	4	4	49
	20p	5	2	5	2	7	0	21
Disabled Parking	Yes	9	6	9	6	8	3	41
	No	9	3	9	10	3	1	35
Sunday Parking	Yes	9	2	4	4	8	2	29
	No	11	6	8	12	4	2	43
Evening Parking	Yes	4	3	6	2	5	1	21
	No	16	6	12	14	7	3	58
Bourne Parking	Yes	18	6	4	15	9	1	53
	No	2	1	15	1	2	1	22
Green Waste Joining Fee £20	Yes	18	4	15	9	8	4	58
	No	2	3	3	7	4	0	19
Green Waste Annual Charge	£25	9	3	10	3	0	1	26
	£30	3	0	4	1	0	1	9
	No Charge	8	4	0	12	0	1	25

Summary of Consultation Results

Council Tax Consultation Responses

Key points made in writing in response to online and SKtoday survey summarised below:

Source	Option	Comment
SK Today	1	Use money saved by the reduction in domestic refuse collection
SK Today	1	Self employed facing difficult economic climate and unable to afford increase.
SK Today	1	Should be a 4 th option to reduce tax by 5% through productivity and reduced staff costs
SK Today	1	Pension will not cover increase. Cut your cloth like we have to.
SK Today	1	Be more efficient with existing income.
SK Today	1	Should be a decrease.
SK Today	1	...way over the top increase in 2007/8
SK Today	1	Much money spent and little improvement seen in recycling and customer service. These areas are not residents priorities but government targets.
SK Today	1	Become more efficient
SK Today	1	Recycling and customer services are not our priorities
SK Today	2	SK today and recycling is a waste of money. Suggest increase of 1.9%
SK Today	2	SK today a waste of money
SK Today	2	2.7% is in excess of the cost of living increase
SK Today	2	Increase in excess of 2.7% will deteriorate pensioners standard of living
SK Today	2	Try good housekeeping
SK Today	2	Inflation increase should be 1.9%
SK Today	2	2.7% is in excess of inflation
SK Today	2	There are far too many chiefs and not enough Indians – better management is required
SK Today	3	Don't forget to invest in the villages
Website	1	Should reduce by 4.95%
Website	1	Any thought of an increase of 4.95% is obscene.
Website	2	Pension will not cover an increase
Website	3	Happier if council would campaign for a fairer local tax, eg local income tax
Website	1	Intelligent turkeys do not vote for Christmas. Like pensioners the council should live within their means my managing more effectively. Reduce overheads and stop wasting money on consultants.
Website	2	Consultation is only paying lip service. Community Support Officers are a waste of money it would be better spent on fully trained constables. Should also reduce management/ consultancy fees.

Appendix B

Summary of Consultation Results

SK Today	1	It is time to be frugal
SK Today	1	Savings can be made as follows <ol style="list-style-type: none"> 1. Rationalise and increase car park charges especially in Bourne 2. Set up industrial provident society which should have been done 4 years ago and saved over £1million 3. Cease to waste money on useless "consultants". 4. Review staffing levels and salary grades
SK Today	2	Would this mean Councillors expenses stay as they were? Old age pensions will not increase by much more than this.
SK Today	2	Its time to do good housekeeping like the low paid workers
SK Today	2	You must look to see if you can save more £80k jobs
SK Today	2	Like pensioners SKDC should cut their cloth accordingly.
SK Today	2	Cut out your waste like these silly newspapers. Customer services and town centres not a priority.
SK Today	1	Do not feel the distribution of benefits is evenly spread across the town. Harrowby Lane area gets less and Earlesfield sees all the benefits. New police station, leisure centre no longer accessible to residents on this side of town.
Stamford Town Council		The Town Council feels most strongly that an increase in car parking fees of 10p and 20p would be demonstrably detrimental to the town and clearly cannot be justified whilst the car parking facility in Bourne is available at no charge.

- Option 1 No increase in council tax
 Option 2 An increase of 2.7% in line with inflation
 Option 3 An increase of 4.95% in council tax